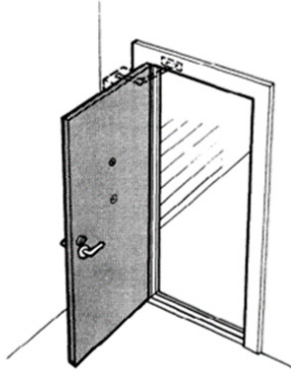


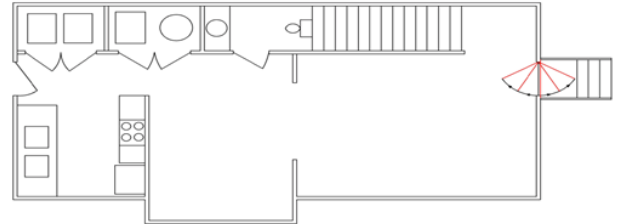
# ADAPTING THE HOME

ACCESSIBILITY RETROFITS FOR EXISTING HOMES

DOOR ASSIST DEVICE



**Automatic Door Opener**



**Manual Swinging Door**

## STEP 1

### Determine physical needs

Consult with the physician and occupational therapist (OT) to complete an activities of daily living (ADL) assessment. If the ADL assessment reveals a mobility limitation, a door assist device may be beneficial.

#### What are mobility limitations?

- Use a walker, cane, or assistive device.
- Use a wheelchair.
- Have difficulty grasping doorknobs.
- Have the arm and upper body strength to pull a door open?

## STEP 2

### Professionals can help evaluate home

Consult with the OT to complete a home safety assessment. The OT can help identify the areas of the home that are difficult to access. If the doorway presents a challenge, consider adding a door assist device.

## STEP 2 (continued)

### Professionals can help modify the home

The OT will work with the homeowner and the builder or remodeler to complete the home modification. The video at

this link shows how an OT can help:

<https://www.youtube.com/watch?v=MyEzDB5S3eE&t=1s>

(source: AOTA and AARP).

## STEP 3

### Select the right device

Consult the OT to select the appropriate door assist device. Automatic door openers or manual swing doors can be used to make entering the doorway easier. The cost varies based on the device.

### Consider the installation and maintenance costs

Typical installation costs for door assist device—

- Cost to widen a doorway: \$700–\$2,500.
- Cost range for devices: \$850–\$2,700.

Typical device annual maintenance costs—

- Inspection and repair: \$50–\$300.
- Lubrication for hinge hardware: \$10 (do-it-yourself).