

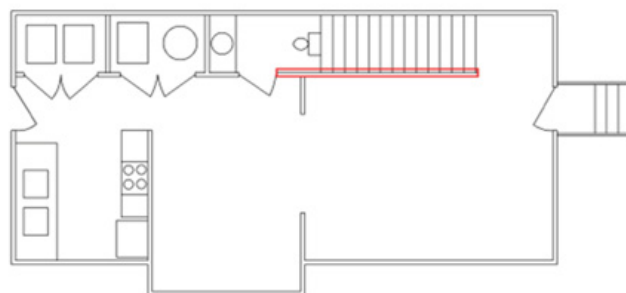
# ADAPTING THE HOME

ACCESSIBILITY RETROFITS FOR EXISTING HOMES

STAIR-CLIMBING DEVICE



**Automatic Stair-Climbing Device**



**Manual Stair-Climbing Device (Railing)**

## STEP 1

### Determine physical needs

Consult with the physician and occupational therapist (OT) to complete an activities of daily living (ADL) assessment. If the ADL assessment reveals a mobility limitation, a stair-climbing device may be beneficial. The OT will need to size the manual stair-climbing device based on the user's biometric measurements.

### What are the mobility limitations?

- Have difficulty climbing stairs.
- Use a walker, cane, or assistive device.
- Are not physically able to climb stairs due to reduced knee health.
- May not have the required arm and upper body strength to use a manual stair-climbing device.

## STEP 2

### Professionals can help evaluate the home

Consult with the OT to complete a home safety assessment. The OT can help one identify the areas of the home that are difficult to access. If the stairway presents a challenge, consider adding a stair-climbing device.

## STEP 2 (continued)

### Professionals can help modify the home

The OT will work with the homeowner and the builder or remodeler to complete the home modification. The video at this link shows how an OT can help:

<https://www.youtube.com/watch?v=MyEzDB5S3eE&t=1s>

(source: AOTA and AARP).

## STEP 3

### Select the right device

Consult the OT to select the appropriate stair-climbing device. Automatic stair/chair climbing devices or manual stair-climbing devices can be used when going up or down stairs. The cost varies based on the device; generally, manual devices are less expensive than automatic devices.

### Consider the installation and maintenance costs

Typical stair climbing-device installation costs—

- Device and installation: \$1,150–\$15,000 (costs based on length of staircase run and turns).

Typical device annual maintenance costs—

- Most automatic devices: \$100–\$400.
- Lubrication for most manual devices: \$10 (do-it-yourself)